

## Architectonics of Music

Steven Holl and Dimitra Tsachrelia

*"Architecture makes music stand still; here time turns to space"*

—Robert Kelly

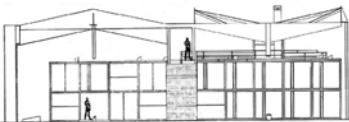
The aim of the studio is the study of architectural language focused on Structure and Light. An emphasis will be on interior spaces with their potential inspiration in musical fragments. Final presentations will include short videos studying 'blocks of time-movement'. This experimental studio will be conducted in 3 parts:

### Part 1: Language: Structure and Light

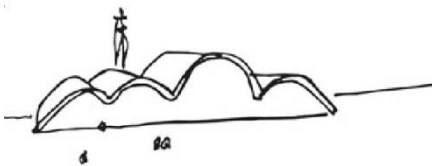
Analysis of 12 canonical examples of modern architecture.



**Linear** – Sendai Mediateque, Toyo Ito, 2001



**Planar** – Heidi Weber Pavilion, Le Corbusier, 1965



**Volumetric** – Church of St. Francis Assisi, Oscar Niemeyer, 1943

**Part 2: Synthesis of 'linguistic collisions'** focusing on structure and light;  
developed in physical models within 16x16x16 inches for mid-term.

### Part 3: Music: blocks of Movement /Time

A studio building for architecture and music of 54,000 sqf (sited at the Tokyo University of Arts).

A fragment of modern music is selected with the guidance of a composer. Model interior spaces are fabricated in relation with the selected music fragments. Blocks of Movement / Time are presented in video and model for the final review.

### Analysis: Interior space focus

#### Linear:

- 1) The Great Work Room, H. Johnson Headquarters, Frank Lloyd Wright, Racine, Wisconsin, 1943
- 2) Sendai Mediateque, Sendai, Toyo Ito, Miyagi Prefecture, Japan, 2001.
- 3) Iberê Camargo Foundation, Álvaro Siza, Porto Alegre, Brazil, 2011
- 4) Satélite Towers, Luis Baragán, Mexico City, Mexico, 1957

#### Planar:

- 1) Heidi Weber Pavilion, Le Corbusier, Zurich, Switzerland, 1965
- 2) Tama Art University Library, Toyo Ito, Tokyo, Japan, 2007

#### Volumetric:

- 1) Berlin Philharmonic interior, Hans Scharoun, Berlin, Germany, 1967
- 2) Guangzhou Opera House interior, Zaha Hadid, Guangzhou, China, 2009
- 3) Mount Tindaya Chapel, Eduardo Chillida, Fuerteventura, Spain, 1994
- 4) Church of Saint Francis of Assisi, Oscar Niemeyer, Belo Horizonte, Minas Gerais, Brazil, 1943
- 5) Tokyo Institute of Technology, Kazuo Shinohara, Tokyo, Japan, 1988
- 6) House under High Voltage lines, Kazuo Shinohara, Tokyo, Japan, 1981

### Reading List:

- 1) Treib, Marc. *Space Calculated in Seconds: The Philips Pavilion, Le Corbusier, Edgard Varese*, Princeton University Press, 1996.
- 2) Thompson, D'Arcy. *On Growth and Form*, Dover, 1992.
- 3) Ghyka, Matila. *The Geometry of Art and Life*, Dover, 1977.
- 4) Toshiko, Mori. *Immaterial/Ultramaterial*, George Braziller, 2002.
- 5) Merleau-Ponty, Maurice. Books in any edition, Northwestern University Press.
  - A) *Phenomenology of Perception*
  - B) *The Visible and Invisible*
  - C) *The Eye and the Mind*
- 6) Holl, Steven. *Parallax*, Princeton Architectural Press, 2000.
- 7) Holl, Steven. *Questions of Perception, William Stout books*, 2010.
- 8) Cage, John. *Silence*, Wesleyan 1<sup>st</sup> ed. 1961.
- 9) Rowe, Colin; Slutzky, Robert. *Transparency, literal and phenomenal*, *Perspecta*, Vol. 8, 1963, pp. 45-54.
- 10) Rowe, Colin; *The Mathematics of the Ideal Villa and other essays*, MIT Press, 1987, first published 1947
- 11) Koren, Leonard. *Wabi-Sabi for Artists, Designers, Poets and Philosophers*, edition 94, Imperfect Publishing, 1994

*Architecture is teamwork. Students will work in teams of 2.*