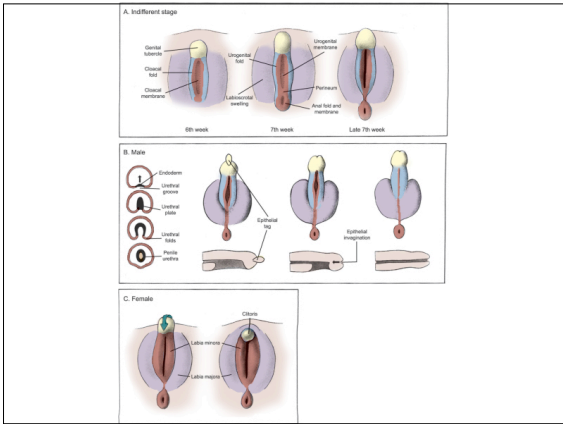
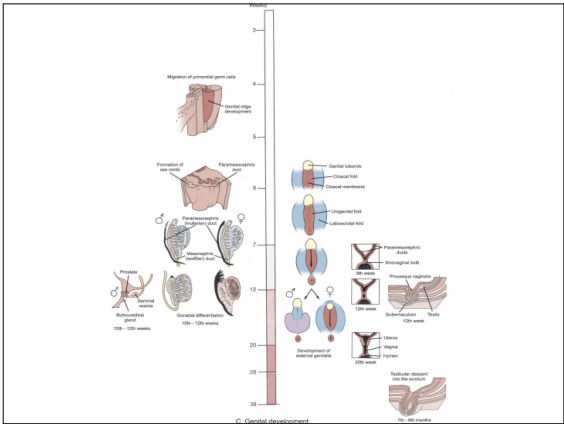
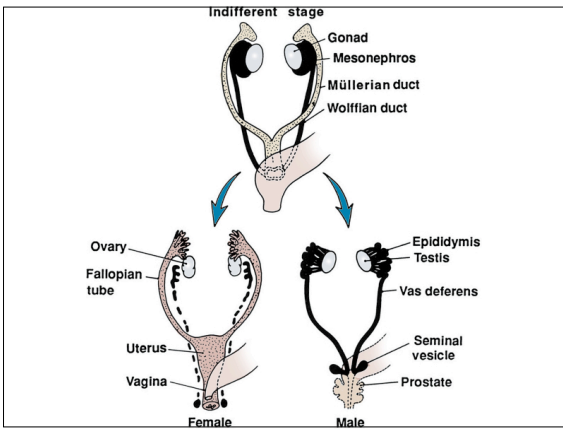
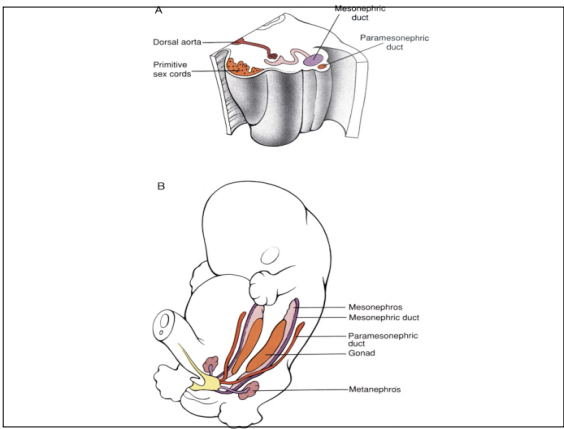
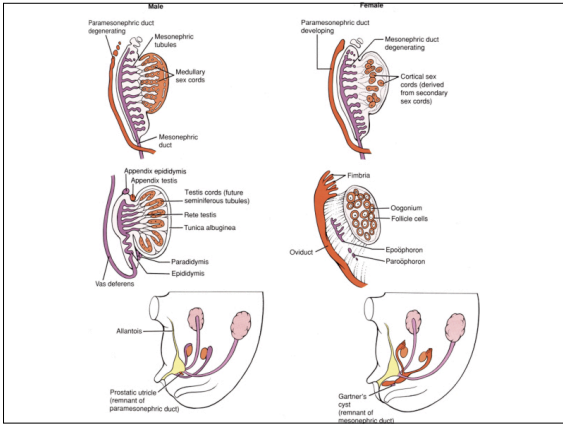


# HD-12: Female Genital Development

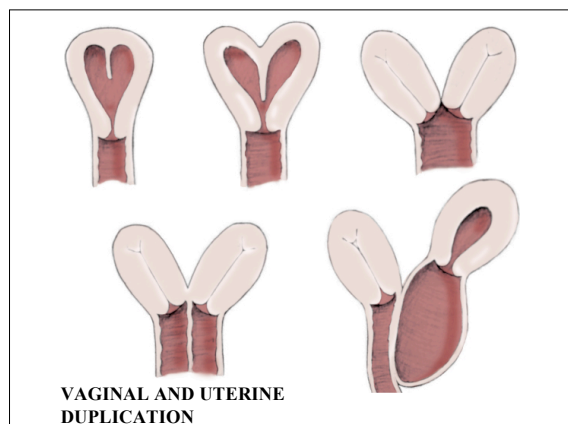
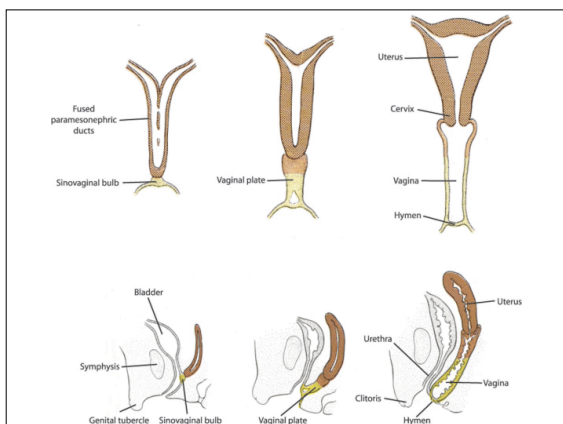
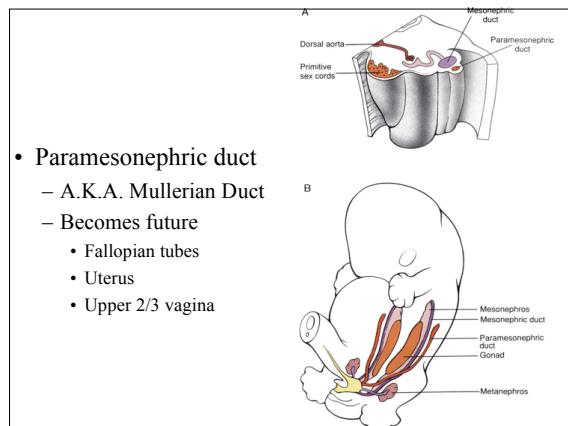
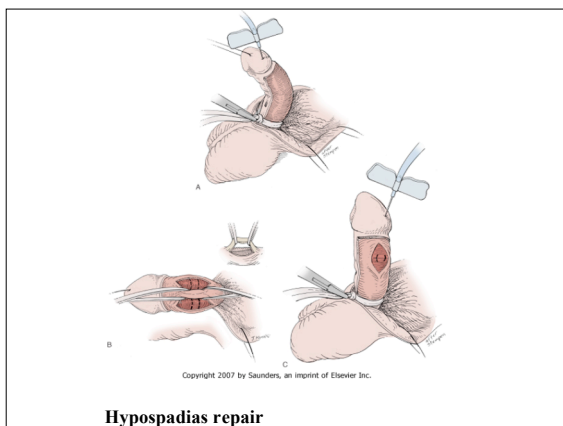
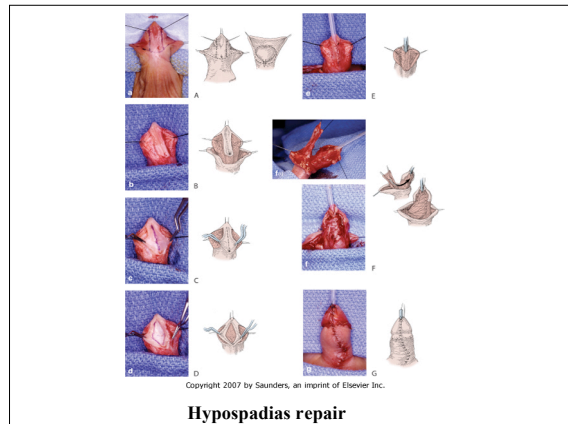
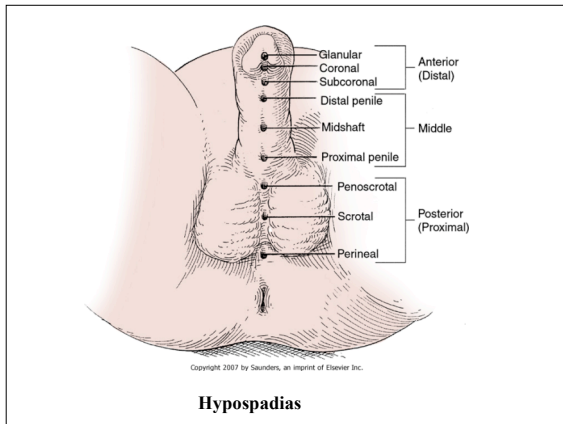
## Female Genital Development

Dr. Richard Schlüssel, M.D., Assistant Professor  
Department of Urology, Columbia University

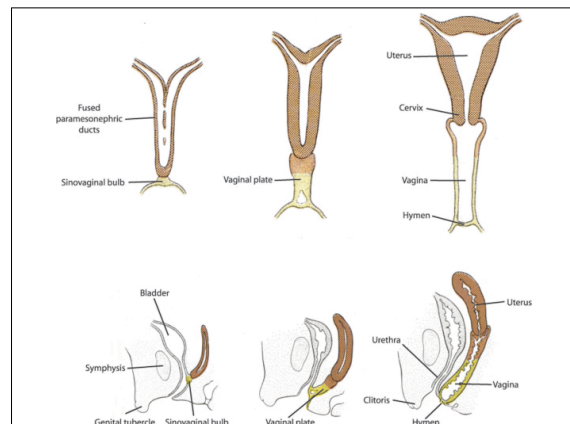
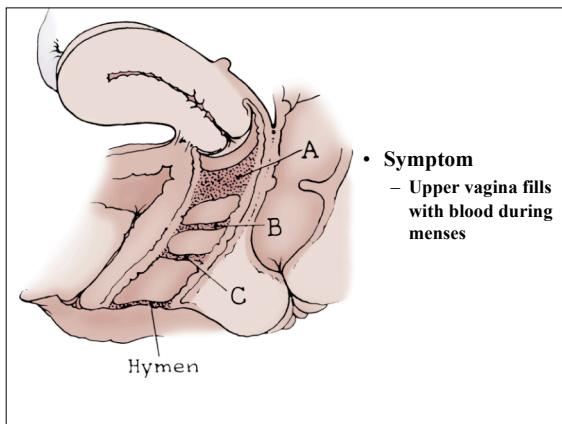
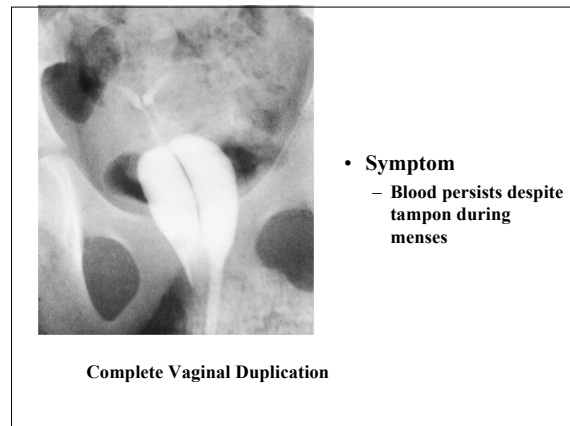
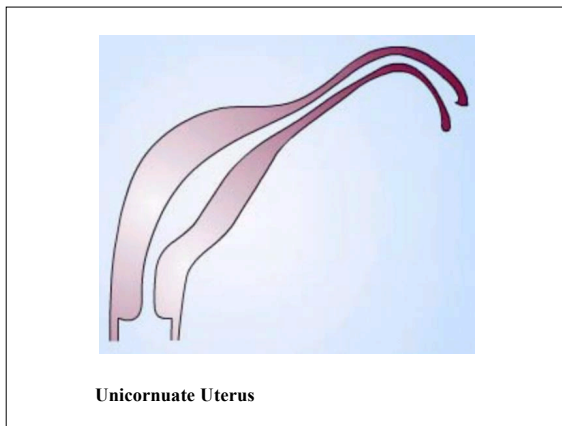
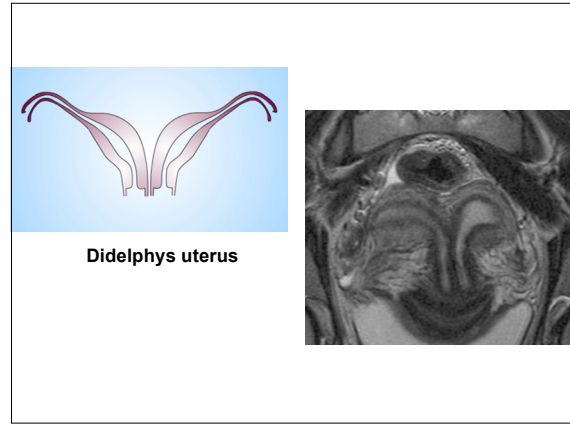
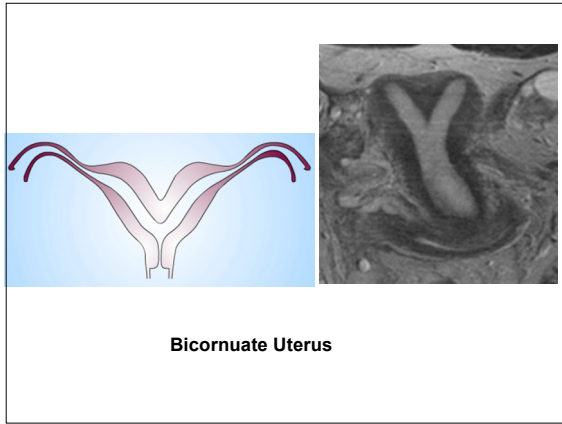
- Normal development
- Duplication
- Agenesis
- UG Sinus
- Imperforate hymen
- CAH



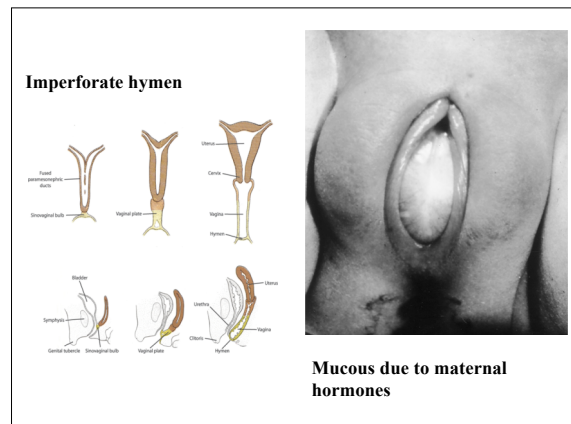
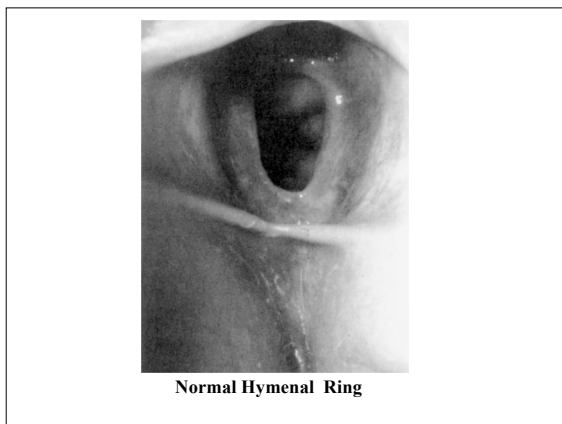
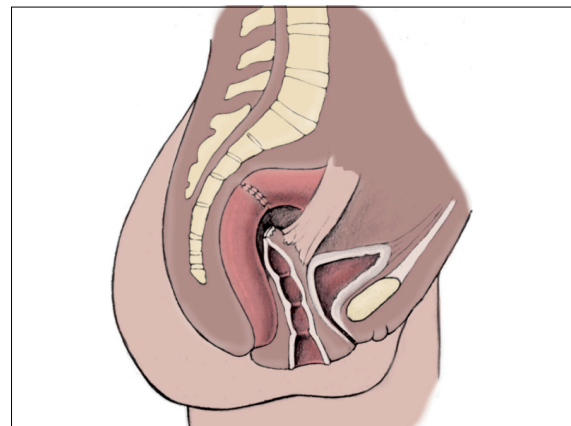
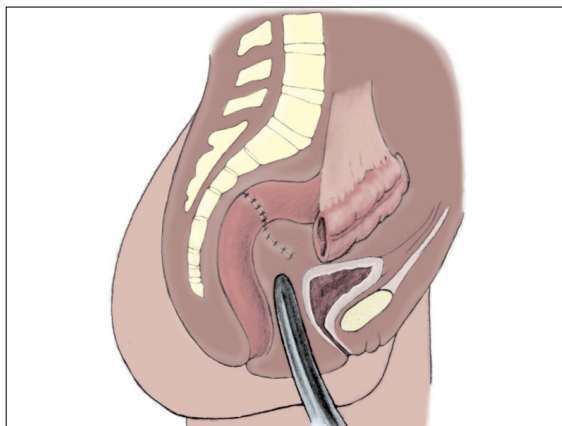
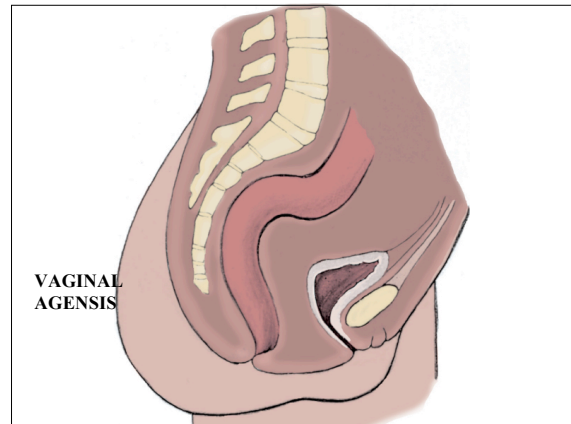
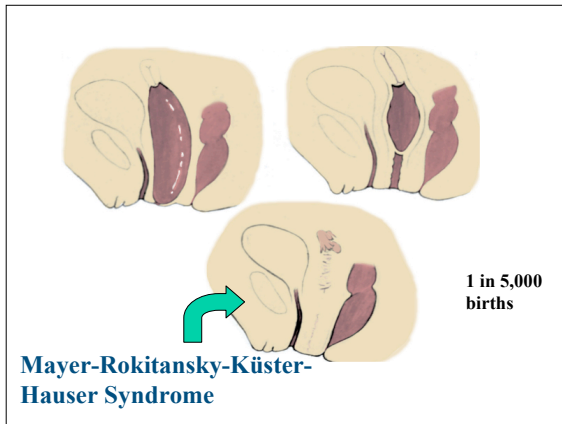
# HD-12: Female Genital Development



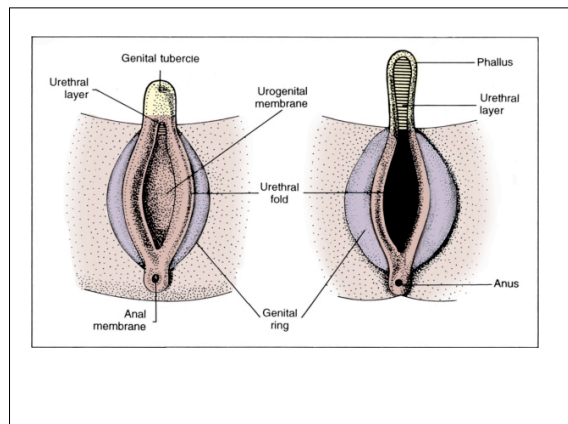
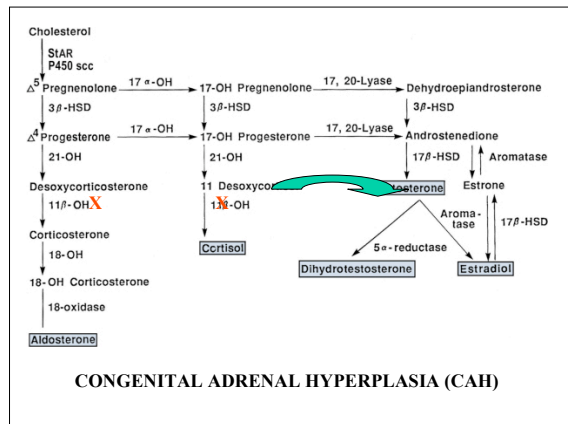
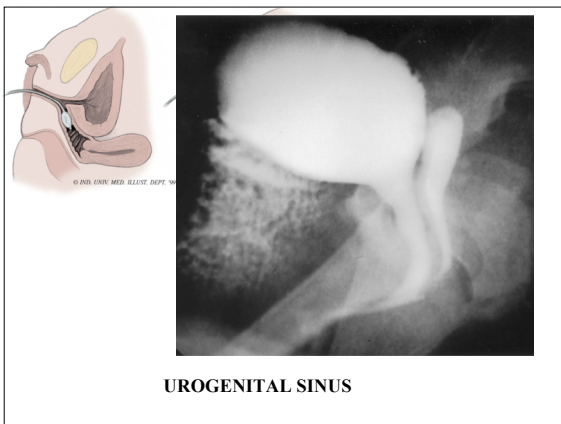
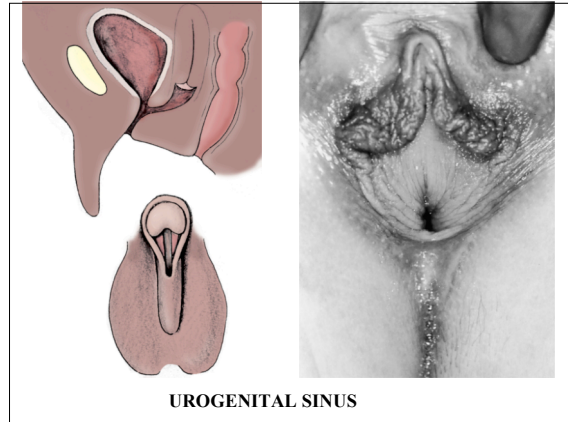
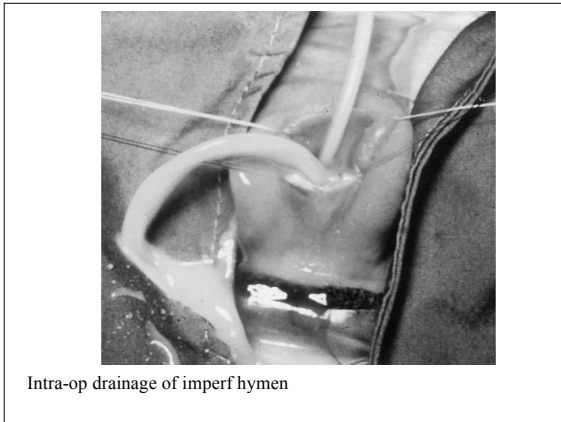
# HD-12: Female Genital Development



HD-12: Female Genital Development



# HD-12: Female Genital Development



# HD-12: Female Genital Development

