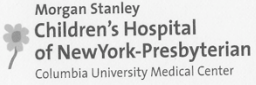



UROGENITAL TRACT Female Development

RICHARD SCHLUSSEL, M.D.
DEPARTMENT OF UROLOGY
DIVISION OF PEDIATRIC UROLOGY

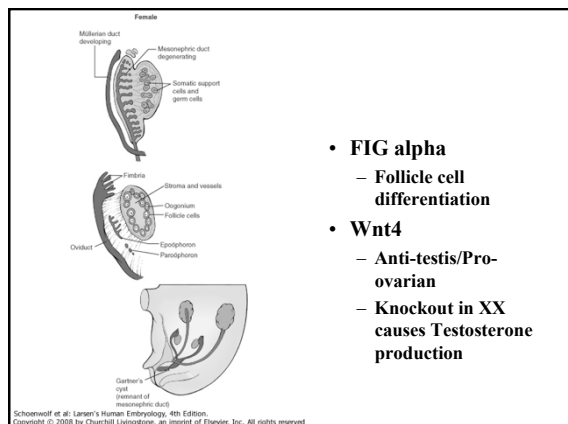
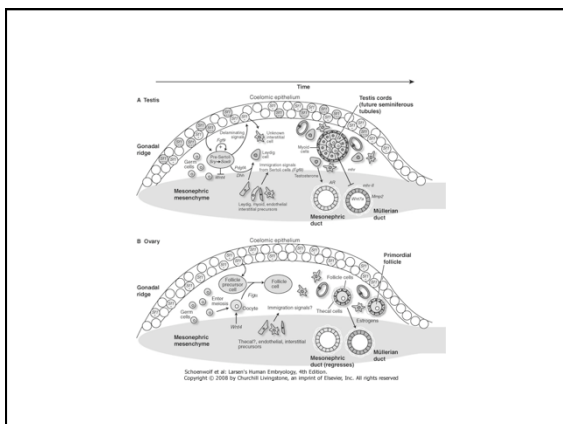
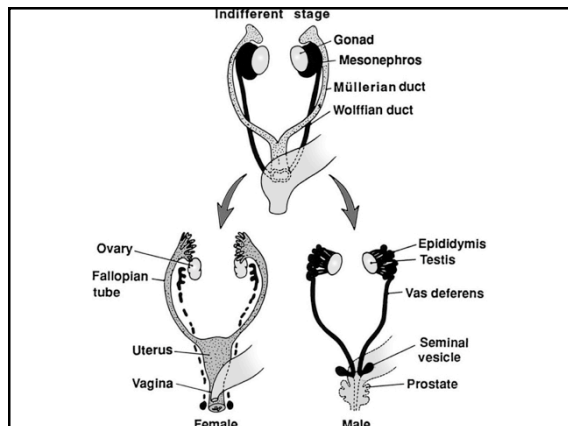


Morgan Stanley
Children's Hospital
of New York-Presbyterian
Columbia University Medical Center



- Normal development
- Duplication
- Agenesis
- UG Sinus
- Imperforate hymen
- CAH

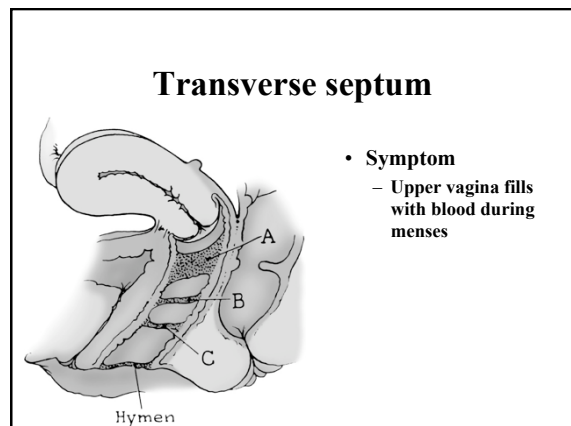
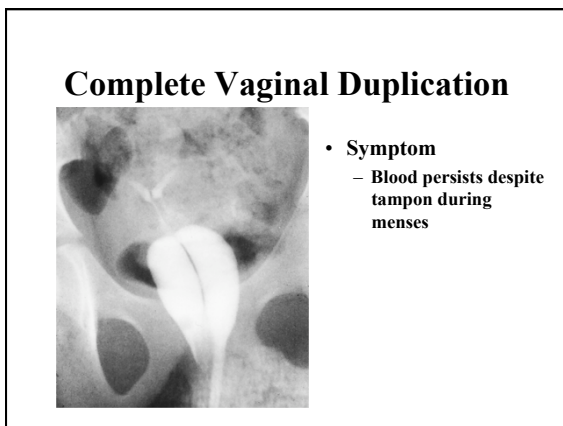
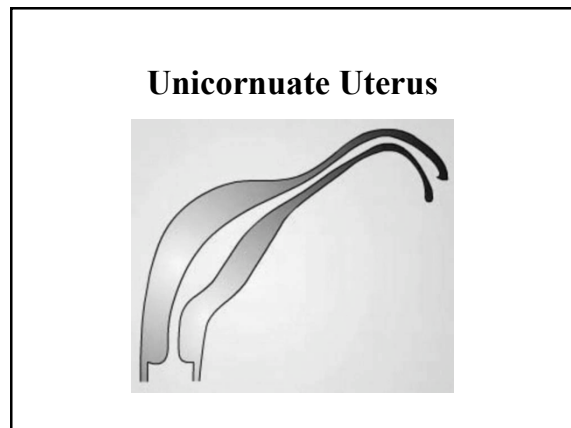
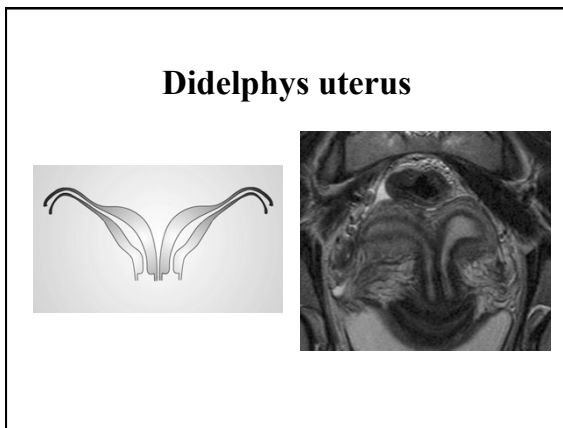
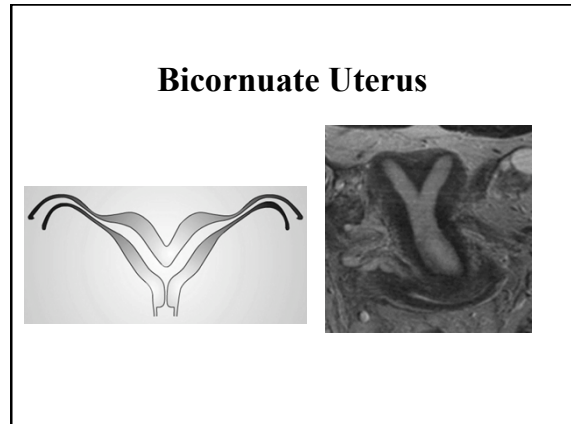
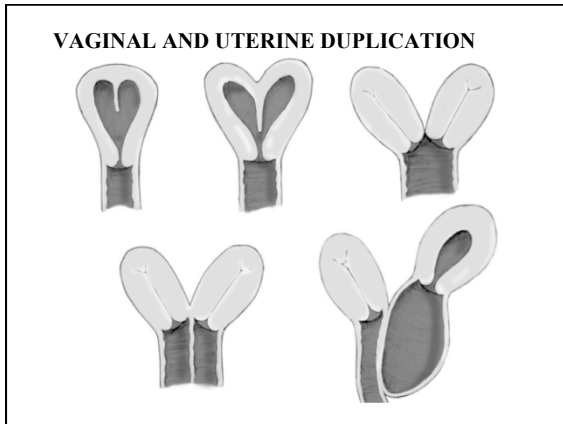
- ## Genital Development
- Chromosomal sex
 - Gonadal sex
 - Phenotypic sex

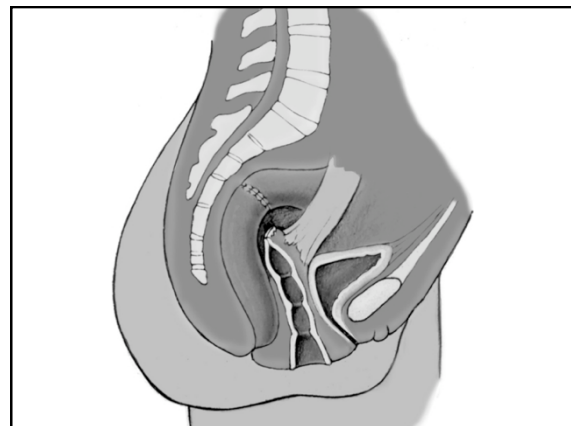
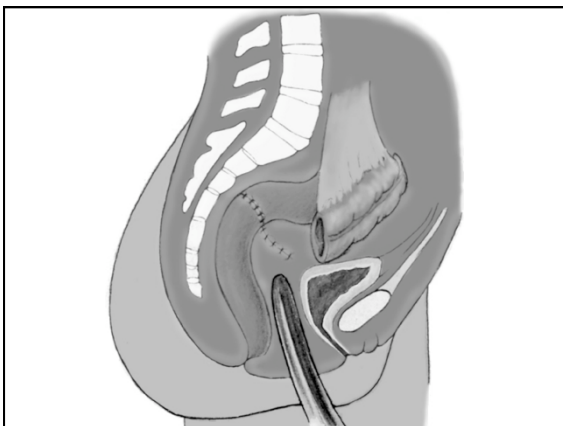
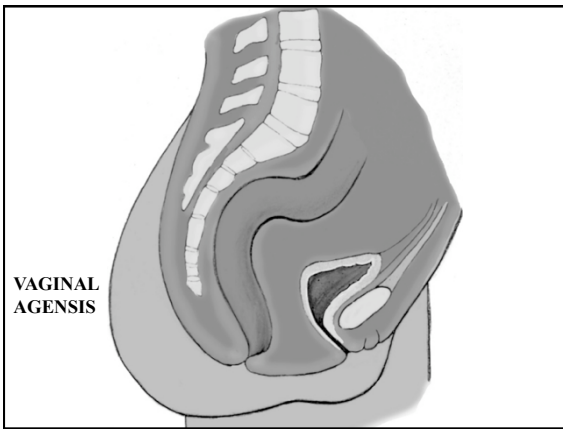
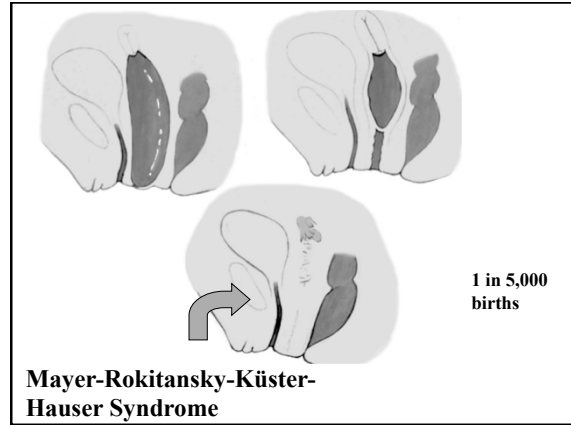
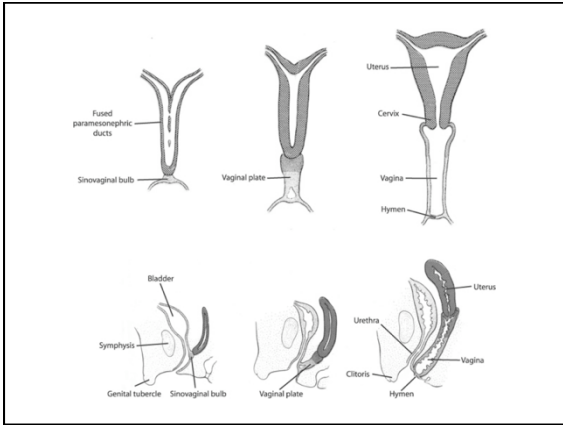


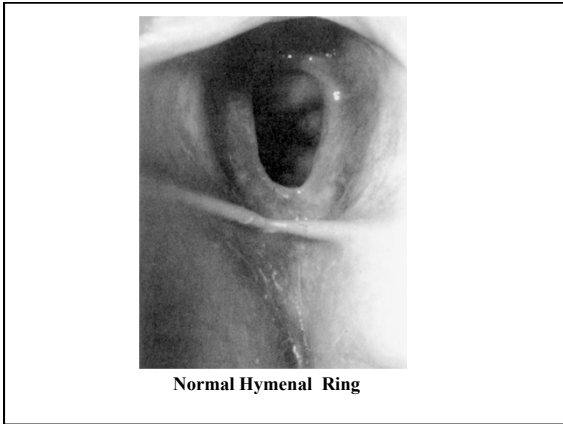
XX males

- small firm testes
- gynecomastia
- small to normal-sized penises
- azoospermia

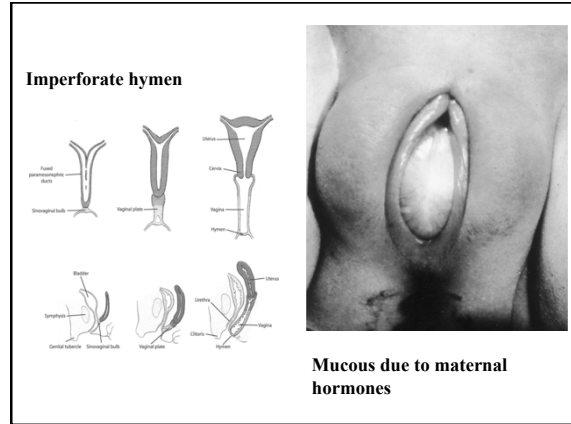
Schoenwolf et al. Larsen's Human Embryology, 4th Edition. Copyright © 2008 by Churchill Livingstone, an imprint of Elsevier, Inc. All rights reserved.



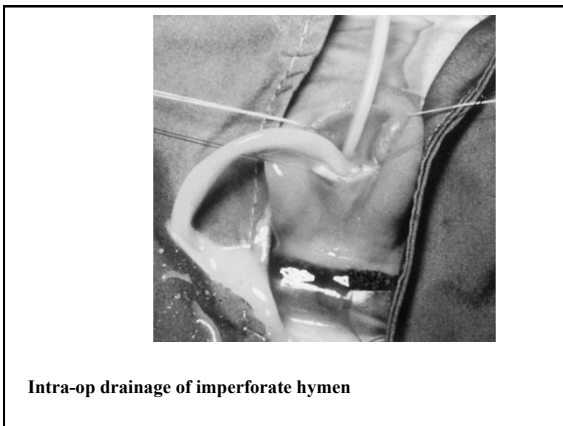




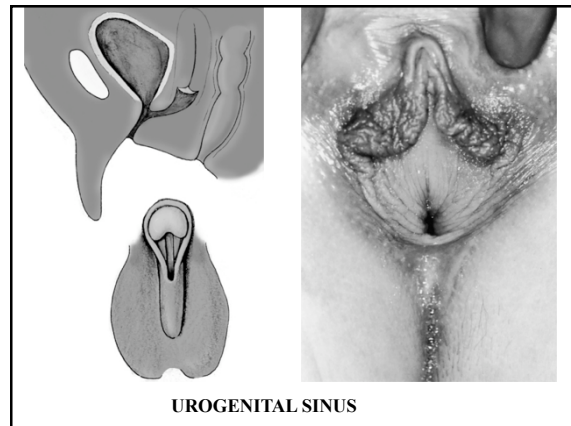
Normal Hymenal Ring



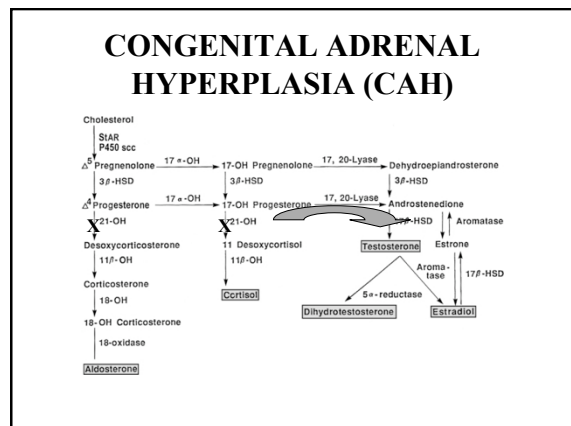
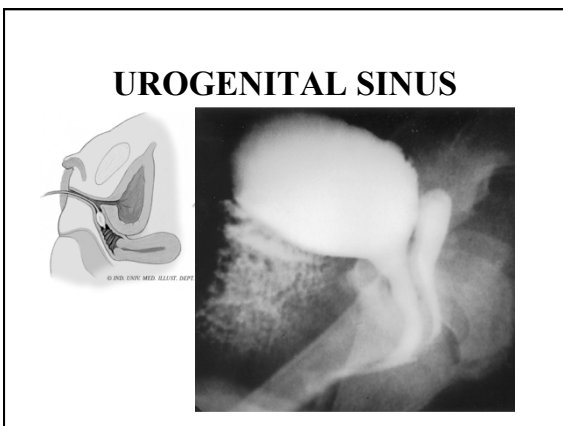
Mucous due to maternal hormones

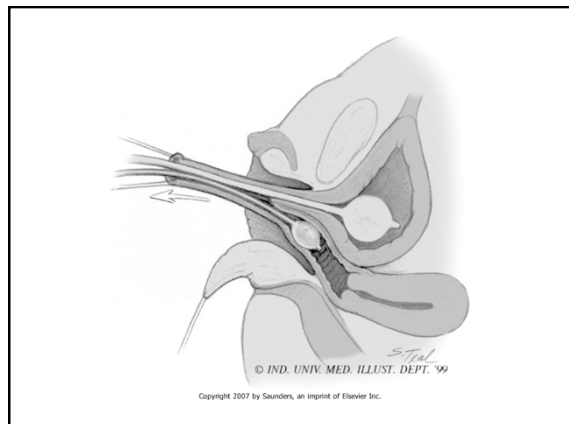
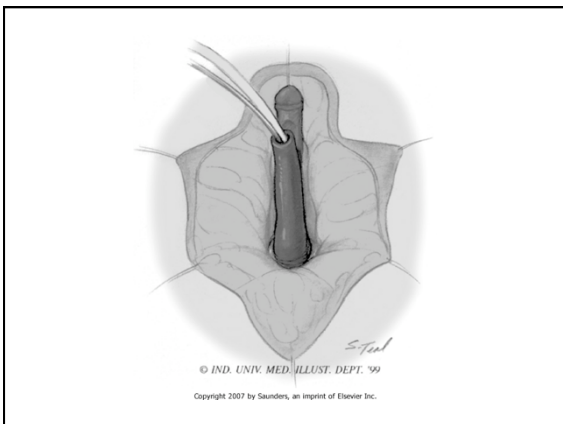
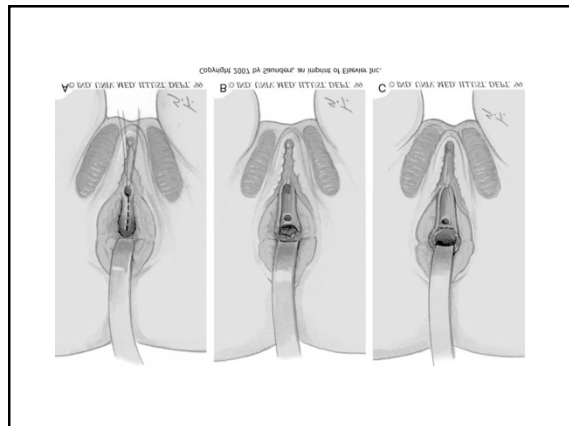
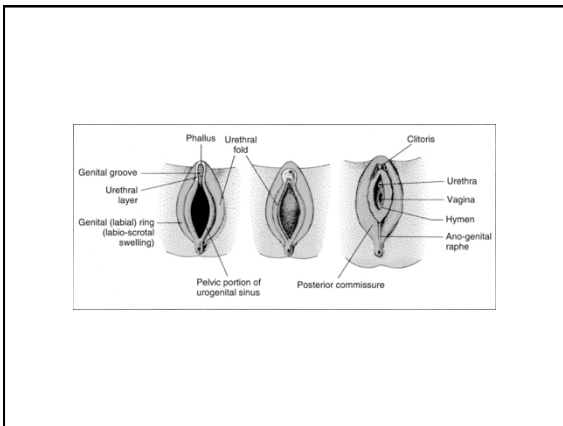
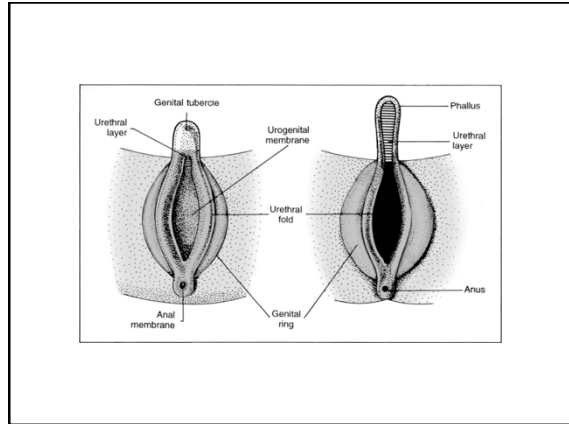
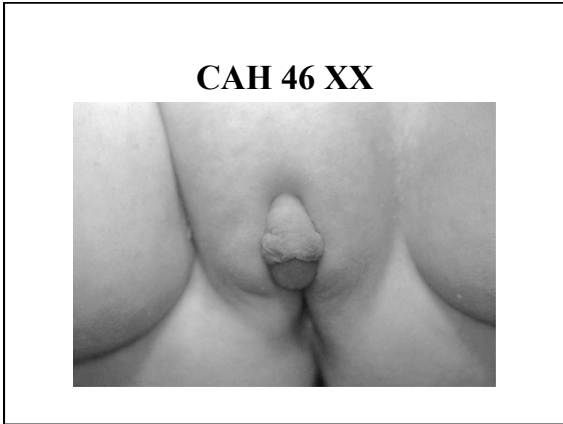


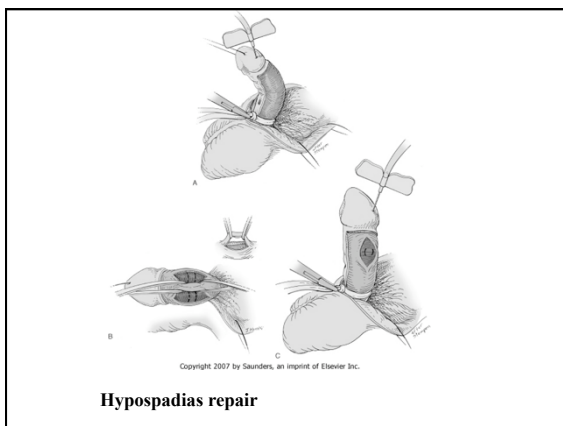
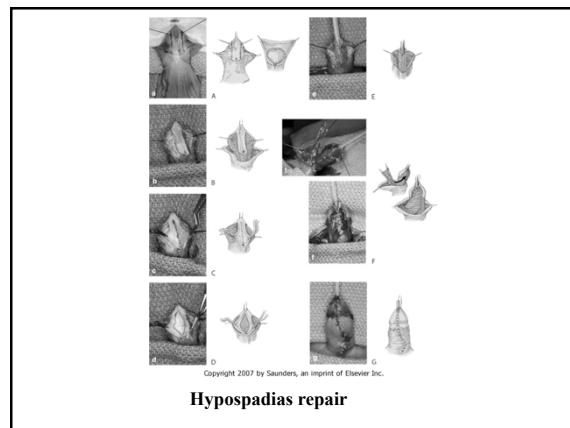
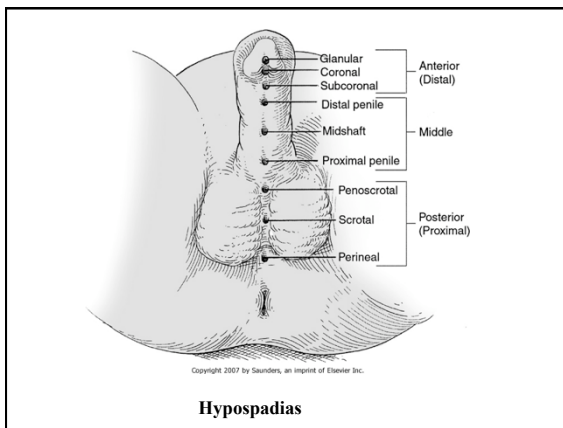
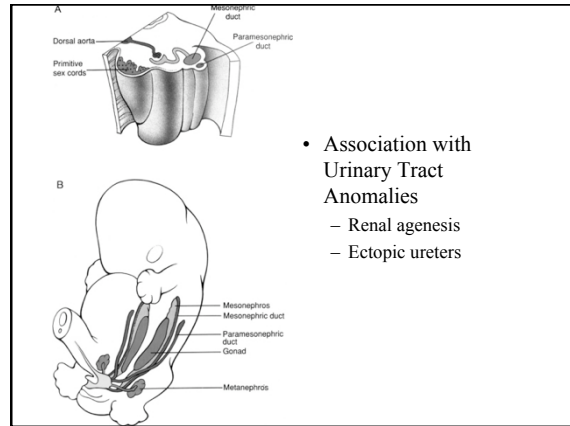
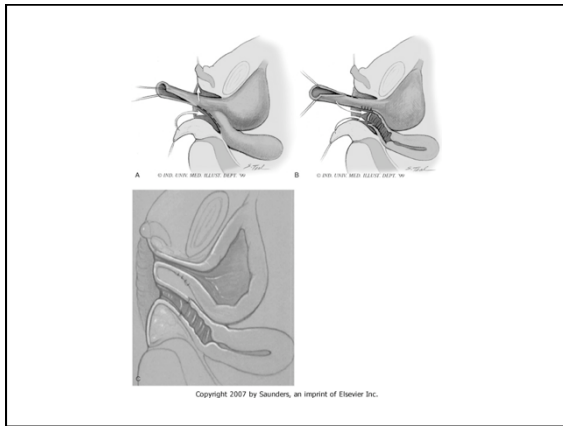
Intra-op drainage of imperforate hymen



UROGENITAL SINUS





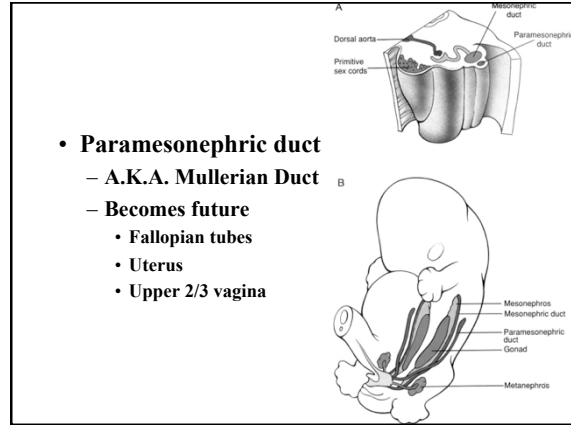
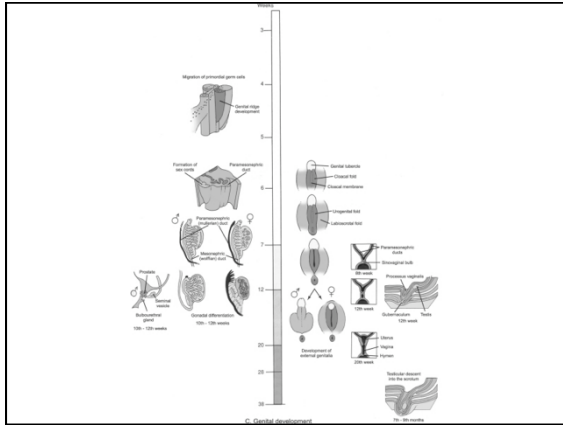


Female Genital Development

Richard Schluskel M.D.
Assistant Professor
Department of Urology
Columbia University

Morgan Stanley Children's Hospital
of NewYork-Presbyterian
Columbia University Medical Center

 COLUMBIA UNIVERSITY
MEDICAL CENTER



- **Paramesonephric duct**
 - A.K.A. **Mullerian Duct**
 - **Becomes future**
 - **Fallopian tubes**
 - **Uterus**
 - **Upper 2/3 vagina**