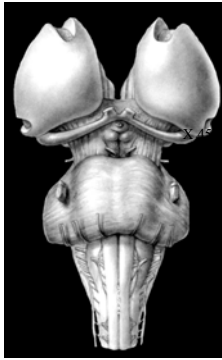
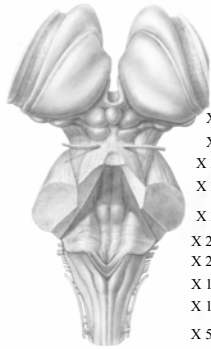


Ventral View of Brainstem



Dorsal View of Brainstem



X 45
X 40
X 37
X 35
X 30
X 25
X 20
X 15
X 10
X 5

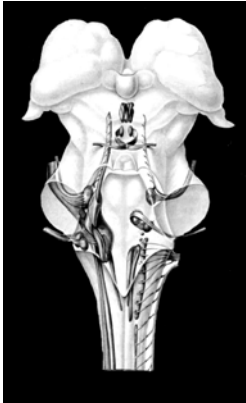
SENSORY CRANIAL NUC

TRIGEMINAL NUC
Mesencephalic Nuc V
Principal Nuc V
Spinal Trigeminal Nuc V

Solitary Nuc
Rostral-Taste
Caudal-Cardiorespiratory

Vestibular Nuc

Cochlear Nuc



Central Connections of Trigeminal Sensory System

Mesencephalic Nuc V

Primary Sensory Neurons
Jaw Stretch Receptors
Principal Nuc V
Tactile (touch, vibration, flutter)

Spinal Nuc V

Caudalis-Pain & Temperature
Interpolaris & Oral-Oral P & T and ?

VII, IX & X somatic afferents
ear and mucous membranes



Visceral Afferent System-Special (Taste) & General

Special Visceral Afferents
Rostral Solitary Nuc-Taste
VII(Geniculate Gang)-Ant 2/3 Tongue
IX (Petrosal Gang)- Post 1/3 Tongue
X (Inferior Gang) - Epiglottis

General Visceral Afferents
Caudal Solitary Nuc-Cardiorespiratory
IX (Petrosal Gang)
X (Inferior Gang)



Spinal Trigeminal Nuc
Nuc Caudalis
Marginal Zone
Substantia Gelatinosa
Nuc Proprius
Spinal Tract V

Dorsal Column Tr & Nuc
Tracts-Gracile
-Cuneate
Nuclei-Gracile



Dorsal Column Nuc & Tracts
Gracile
Cuneate

Spinal Nuc & Tract V

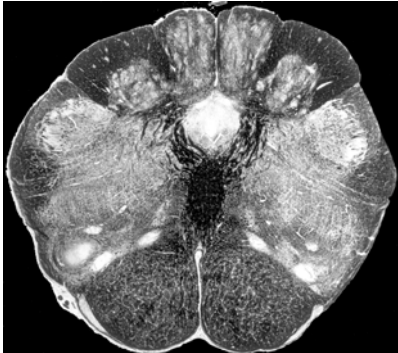
Caudal Solitary Nuc (GVA)

ALS

Internal Arc and Med Lem

Reticular Formation

Pyramids



Posterior System

Medulla: Vertebral, Ant Spinal, PICA

Pons: Basilar, AICA, Sup Cerebellar

Cerebellum: PICA, AICA, Sup Cerebellar

Midbrain: Sup Cerebellar, Post Comm, Post Cerebral

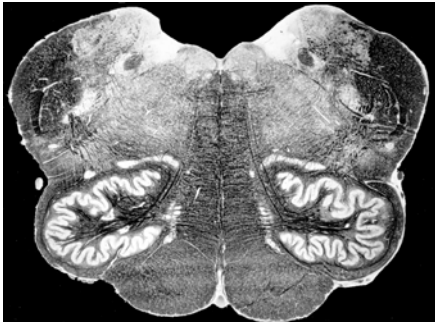


Sensory Nuc & Tr Solitary (SVA-Taste)
Vestibular
Spinal Trigeminal
ALS
Med Lem

Reticular Form

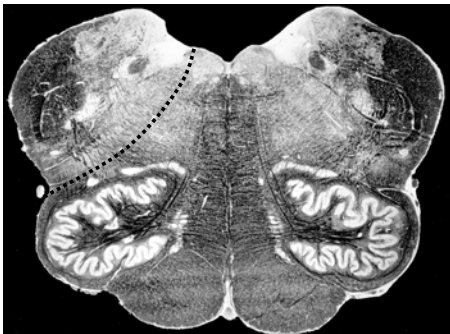
Inferior Olive

Pyramid



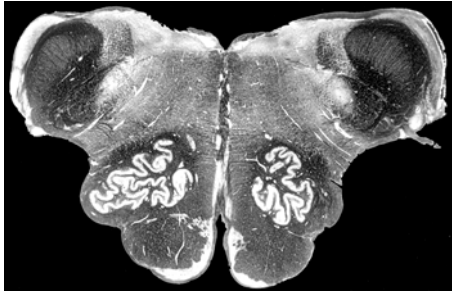
X 20

PICA



Vertebral

Sensory Nuc & Tr
Vestibular
Cochlear
Spinal Trigeminal
ALS
Med Lem
Raphe Nuc
Reticular Form.
Inferior Olive



Sensory Nuc & Tr
Vestibular
Spinal Trigeminal
Central Tegmental
ALS
Med Lem
Trigeminothalamic & Lem
Reticular Form
Pontine Nuc
Corticospinal and bulbar



Sensory Nuc & Tr
Principal Trigeminal
Central Tegmental
Med & Trigeminal Lem
ALS & Trigeminothalamic
Reticular Form
Pontine Nuc
Corticospinal & bulbar

