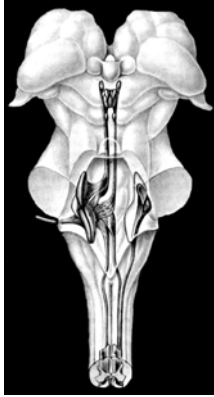


### Vestibular Pathway

Hair Cells Vestibular Labyrinth  
Linear Acceleration (Ut & Sac)  
Angular Acceleration (Semicirc Can)  
Vestibular G.-Vestibular Div of VIII  
Vestibular Nuc Complex  
Lat Vest Nuc: LVST (Posture)  
Mid Vest Nuc: Desc MLF or MVST  
(Head Movement)  
SupVest Nuc: Asc MLF (Eye Movement)  
Vestibular Nuc Project to Thalamus (VPN)



---

---

---

---

---

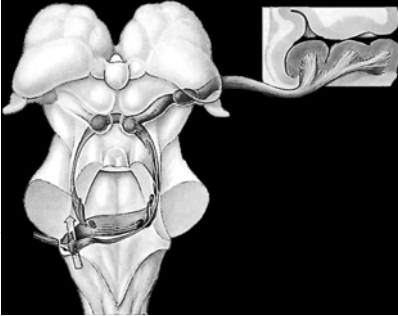
---

---

---

### Auditory Pathway

Cochlea Hair Cells-Tonotopic  
Spiral G. - Coch Div of VIII  
Ventral Cochlear Nuc (VCN)  
Characteristic Freq (CF)  
Sound Localization (Hor)  
VCN projects bilaterally to IC  
by way of Sup Oliv Comp,  
Trapezoid Body, & LL  
Dorsal Cochlear Nuc (DCN)  
Sound Localization (Ver)  
Sound Pattern  
DCN projects to IC by way of  
DAS & LL  
IC projects to MGN by way  
of the Brachium of IC  
MGN projects to HG (A1)



---

---

---

---

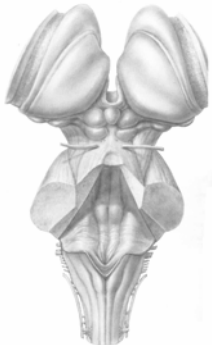
---

---

---

---

### Dorsal View of Brainstem and Thalamus



---

---

---

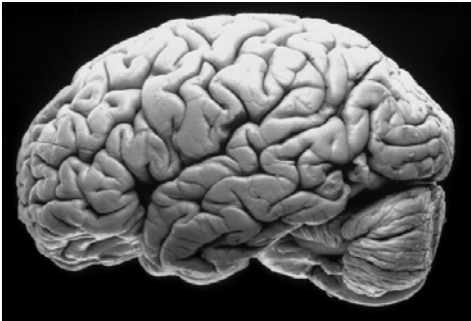
---

---

---

---

---



---

---

---

---

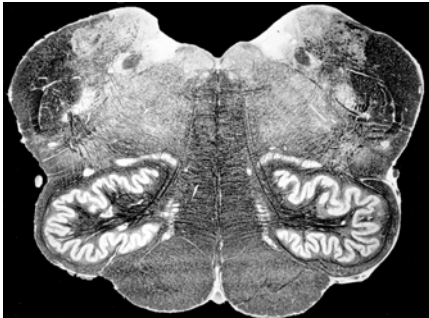
---

---

---

---

Vestibular Nuc  
MLF (Desc)  
PICA Lesion (sen defs)  
  
Med Lem  
Pyramid  
Olive  
Reticular Form  
Solitary Nuc & Tract  
Spinal Nuc & Tr V  
ALS



---

---

---

---

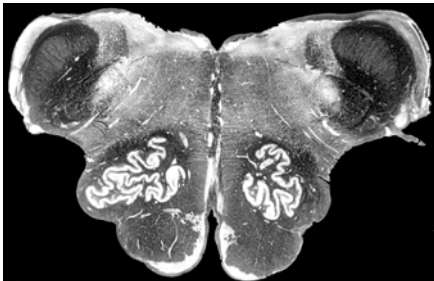
---

---

---

---

Vestibular Nuc  
MLF  
Dorsal Cochlear Nuc  
Ventral Cochlear Nuc  
  
Med Lem and ALS  
Pyramid  
Olive  
Raphe  
Spin Nuc & Tr V  
Reticular Form



---

---

---

---

---

---

---

---

Vestibular Nuc  
MLF  
Sup Olivary Nuc & Lat Lemniscus  
Trapezoid Body  
  
Med Lemniscus & ALS  
Central Teg Tr  
Corticospinal & Bulbar Tr  
Cerebellar Ped  
Pontine Nuc  
Reticular Form  
Spinal Nuc & Tr V



---

---

---

---

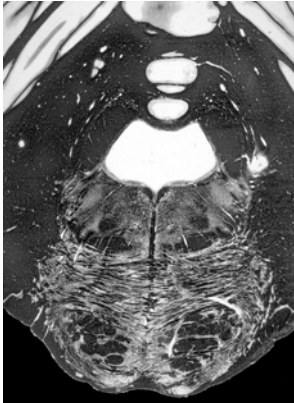
---

---

---

---

Sup Olivary Nuc  
MLF  
Lat Lemniscus  
  
Med Lem & ALS  
Cent Teg Tr  
Prin Sen Nuc V  
Mot Nuc V  
Pontine Nuc



---

---

---

---

---

---

---

---

Lat Lemniscus & Nuc  
MLF  
  
Med Lem & ALS  
Sup Cerebellar Ped  
Parabrachium Nuc  
Pontine Nuc  
Periaquad. Gray



---

---

---

---

---

---

---

---

Inferior Coll  
Lat Lemniscus  
Brachium of IC  
MLF  
  
PAG  
Mesenceph Nuc & Tr V  
Reticular Form  
Substan Nigra  
Sup Cereb Ped (Dec)  
Med Lem & ALS  
Cereb Ped



---

---

---

---

---

---

---

---

MGN  
Brach of IC  
MLF & III Nuc  
  
ML & ALS  
Cent Teg Tr  
Brach of SC & SC  
Optic Tr  
LGN  
PAG  
EdinWest  
Mesen Nuc & Tr



---

---

---

---

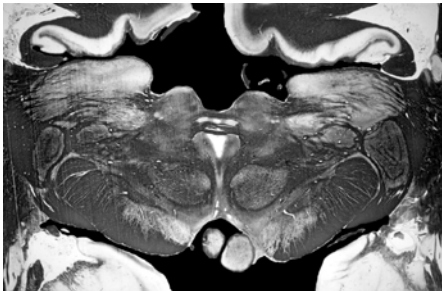
---

---

---

---

MGN  
Brach of IC  
  
LGN  
SC  
Pretectal Reg  
Edinger W  
Post Comm  
Optic Tr  
Brach Sup Coll



---

---

---

---

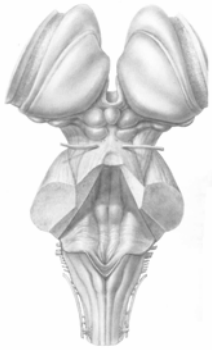
---

---

---

---

**Dorsal View of Brainstem and Thalamus**



---

---

---

---

---

---

---

---

MGN  
Vent Post Nuc

LGN  
Thal  
Hipp Form  
Sup Cereb Ped (Dec)  
Olive  
Med Lem & ALS  
Pyramid



---

---

---

---

---

---

---

---



---

---

---

---

---

---

---

---

